

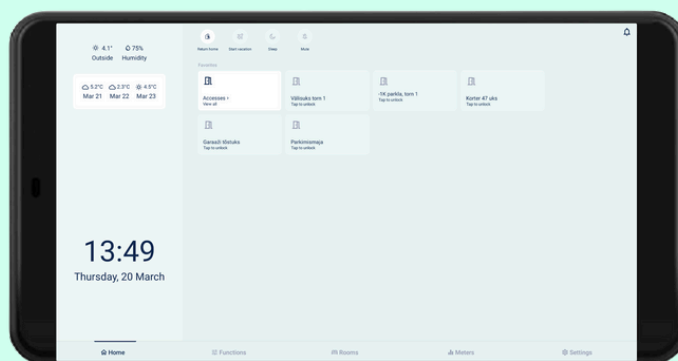
BISLY HUB LIGHT – 5.5"

CONTROL PANEL

Part No: 1501001

The Bisly 5.5" Hub Light is a compact and smart control panel designed for building automation. It provides a user-friendly interface for managing lighting, zone control, access management, intercom and security settings within residential, commercial, and hospitality segments.

The device is based on a 5.5" Android tablet with a PoE port for both Ethernet connectivity and power supply.



Device Specifications

Device OS	Android 14
Display	Screen size – 5.5 inch TFT LCD IPS Resolution – 1080 x 1920 FHD Brightness – 400 cd/m2 Contrast Ratio – 1000:1 View Angle – 80° Touch Panel – Capacitive 5-point multi-touch Proximity detection – yes (sensor)
Power	Connection – PoE 802.3af (RJ45 Ethernet) Consumption – 12.5 W max
Firmware update	Over-The-Air Update capability
Ambient operating temperature	+5 ... 40°C
Humidity	max. 80% r.H. (non condensing)

Product Characteristics

Mounting type	Bracket attached to an EU junction box (62 mm diameter)
Colour, finish	Black, matte
Flammability of casing	Fire retardant according to UL94 V0

Weight & Dimensions

Weight	200g
Product dimensions	144 x 81 x 10 mm (screen)

Certifications & Standards

Environmental protection class	IP40
Markings	CE, RoHS, WEEE
Directive compliance	LVD, EMC, RoHS, WEEE

Physical Dimensions



Mounting instructions

Important: Installation must be performed by a qualified electrician in accordance with regulations. The screen must be installed in a dedicated electrical junction or conduit box with a minimum inner diameter of 70mm.

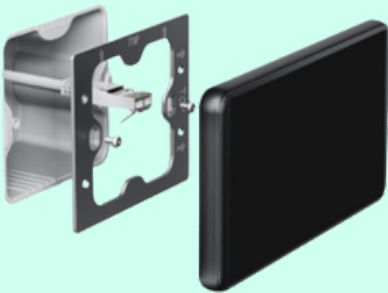
Pre-Installation Checks

- Ensure the installation location is free from direct sunlight, vents, or heat sources.
- Confirm the wall material supports secure mounting.

Installation Steps

1. Install the Mounting Plate

- Secure the metal backplate to the wall with screws.
- Double-check alignment with a level

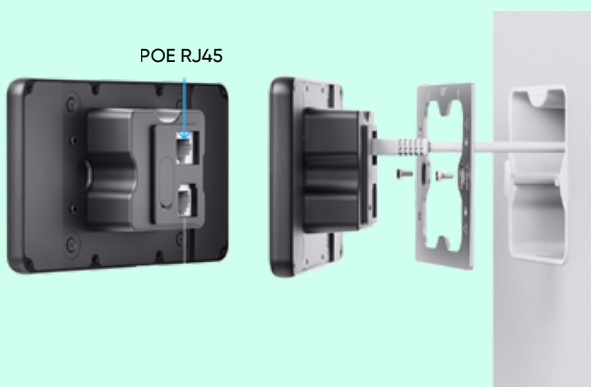


2. Connect Wiring

- Connect the CAT 5e or better cable to the back PoE port of the screen.

3. Attach the Screen

- The screen has a built-in magnet that easily attaches to the metal backplate.



Final Check

- When the PoE cable is powered, the screen shall boot up automatically. It might take up to 5 minutes to finish the boot up sequence. Ensure the screen is functioning correctly. If issues arise, verify wiring and connections before troubleshooting further.